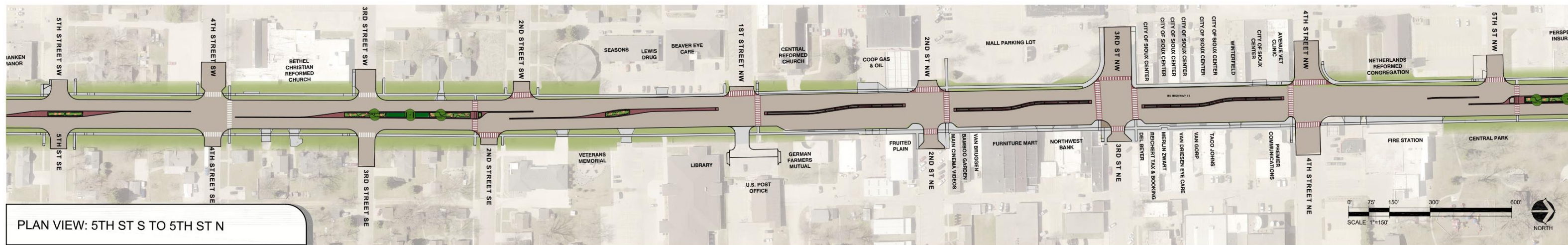


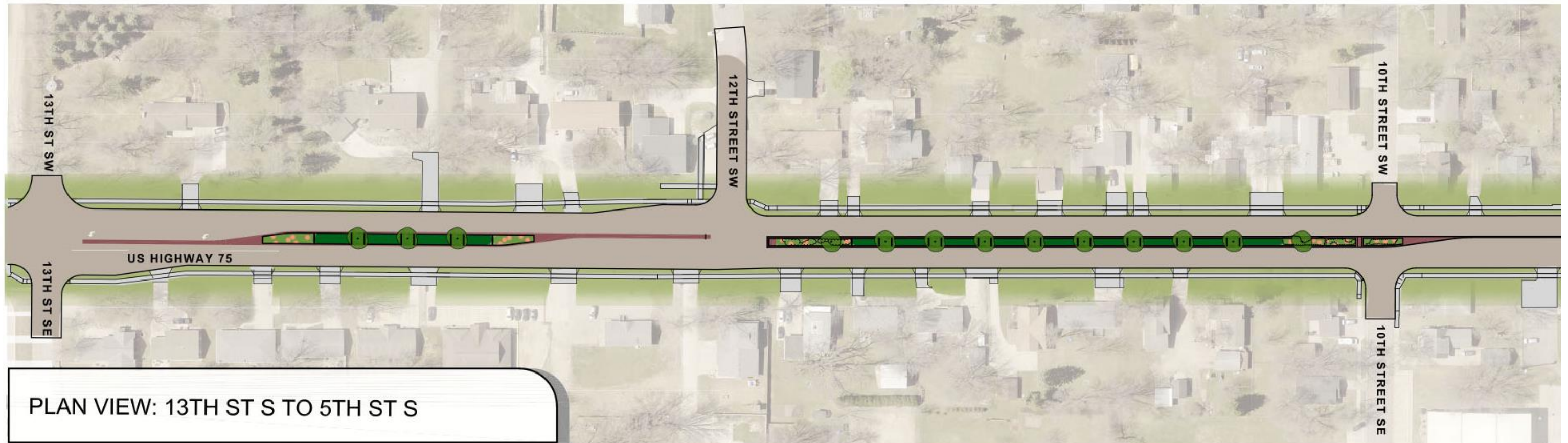


Phase 2

- Three years of construction – 2024-2026
- 13th St. S to 12th St. N. reconstruction and utility updates
- Full closures for construction



Phase 2 – 2024 Construction



- First between 13th and 12th St. SW
- Pavement removal, sidewalk removal
- Underground utilities
- Might pave this block with Phase 1
- Then work toward 9th St. S

Phase 2 – 2024 Construction



- Goal is to keep 9th St. S open as possible
- About 1 month closure of 9th St. W
- 7th St. S changes
- Working toward Bethel CRC area this year



DGR
ENGINEERING

CONFLUENCE


Sioux Center
growing ● bright

13th-12th St. S

2024 Construction



CONFLUENCE



12th-10th St. S
2024 Construction



CONFLU



10th -9th St. S
2024 Construction



DGR
ENGINEERING

CONFLUENCE


Sioux Center
growing ● bright

7th St. S
2024 Construction



DGR
ENGINEERING

CONFLUENCE


Sioux Center
growing ● bright

5th St. S
2024 Construction